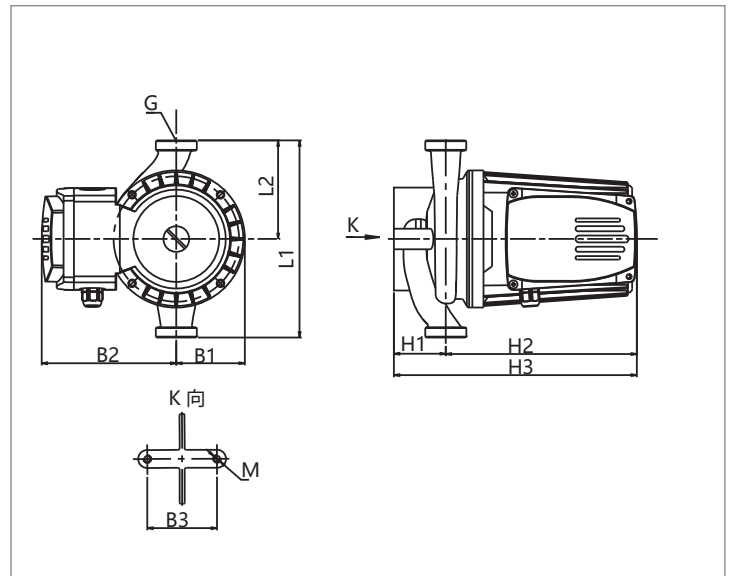
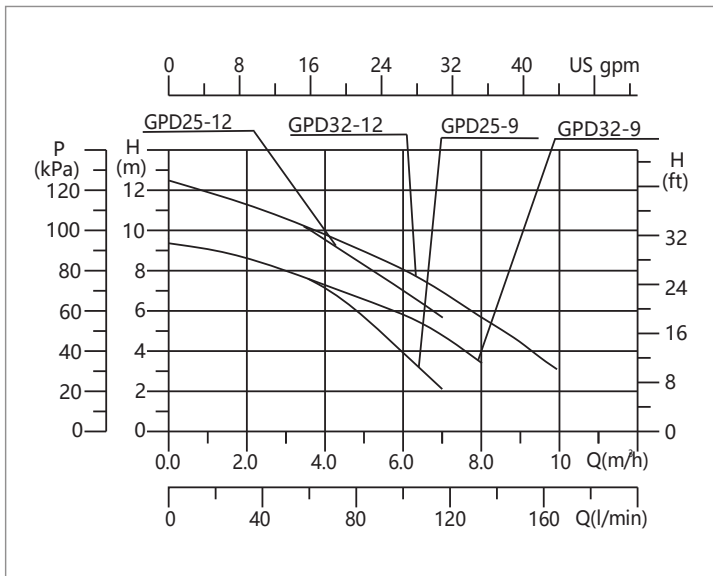


Technical data SPERONI 25,32/120-180



Model	Max. Flow (m³/h)	Power (W)	Rated Flow (m³/h)	Rated Head (m)	Rated Current (A)		Voltage (V)		Material of pump housing			
					115V	230V	115	230	Cast Iron	Plastic	Copper	Stainless steel
GPD 25-9	7	300	4	7	3	1.5	●	●	●			●
GPD32-9	8	300	5	6.5	3	1.5	●	●	●			
GPD25-12	7	500	5	8		2.5		●	●			●
GPD32-12	10	500	6	8		2.5		●	●			

产品型号 Model	Dimension									Weight (Kg)	
	H1	H2	H3	L1	L2	B1	B2	B3	M	N.W.	G.W.
GPD25-9	44	165	209	180/220	90/110	68	99	70	M8	6.4	6.8
GPD32-9	49	165	214	180/220	90/110	68	99	70	M8	7	8.1
GPD25-12	44	185	229	180/220	90/110	68	99	70	M8	7.7	8.5
GPD32-12	49	185	234	180/220	90/110	68	99	70	M8	8.4	9.5

Model	Connection/Flange	Package size(mm×mm ×mm) Outer box
GPD25-9	1¼"-¾" or 1½"-1"	530×420×250
GPD32-9	2"-1 ¼" or 1½"	530×420×250
GPD25-12	1¼"-¾" or 1½"-1"	530×420×270
GPD32-12	2"-1 ¼" or 1½"	530×420×270

Net weight: weight of pump, accessory not included.
Gross weight: manual, connection and package included.

● represents optional product specification.