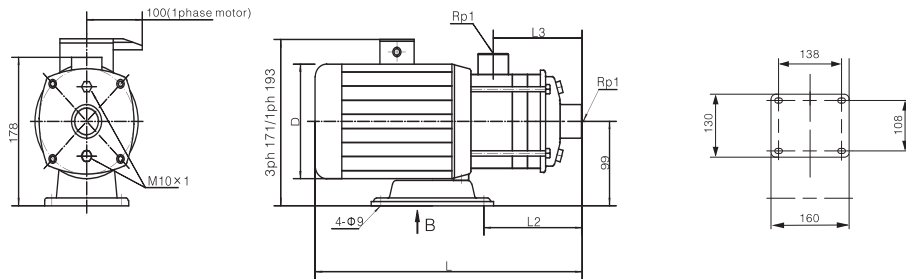


Performance data

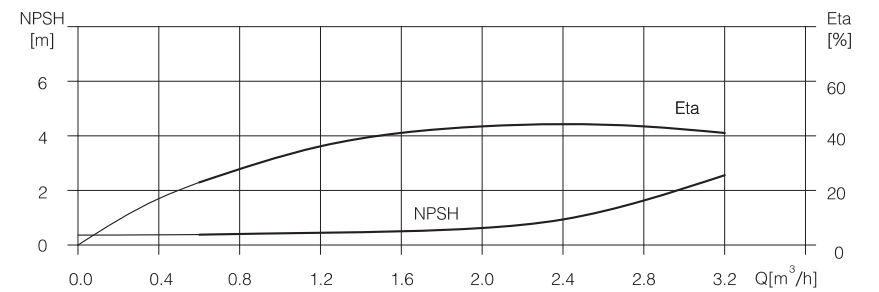
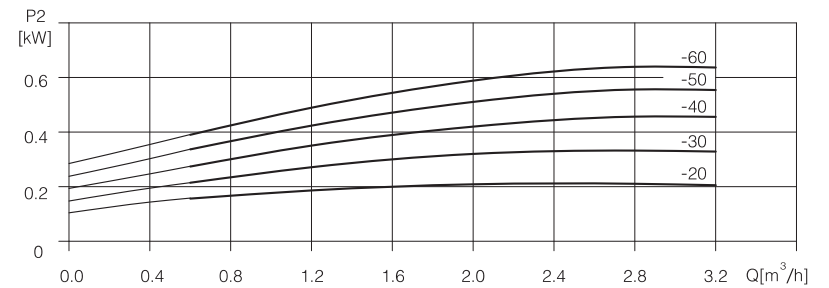
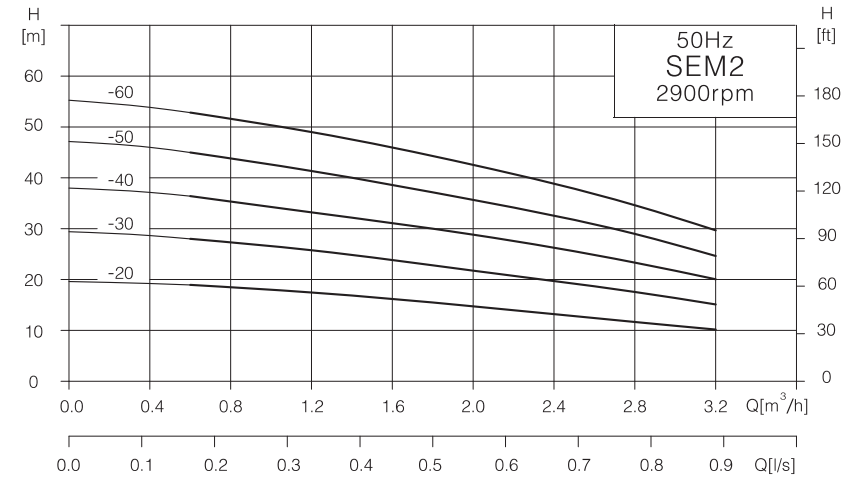
Model	Power		Q (m ³ /h)	0.6	1.2	1.6	2	2.4	2.8	3.2
	(kW)	(HP)								
SEM2-20	0.37	0.5	H (m)	18.6	17.6	16	15	13.5	10.6	9.3
SEM2-30	0.37	0.5		27.7	26	24	22	19.5	16.5	13.5
SEM2-40	0.55	0.75		35.7	34	32	29	25.5	23.5	19
SEM2-50	0.55	0.75		45	42	39	36	33	28	24.5
SEM2-60	0.75	1		53	50	47.5	43.5	39	34	29.5

Installation dimensions and weight



Motor	Model	Dimension (mm)				Weight (kg)
		L	L2	L3	D	
3ph/1ph	SEM2-20	328	103	87	137	12
	SEM2-30	346	121	105	137	12
	SEM2-40	364	139	123	137	13
	SEM2-50	382	157	141	137	13
	SEM2-60	431	175	159	156	14

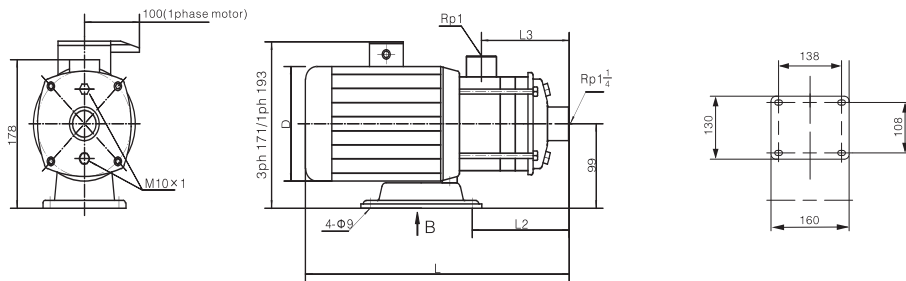
Performance cruve



Performance data

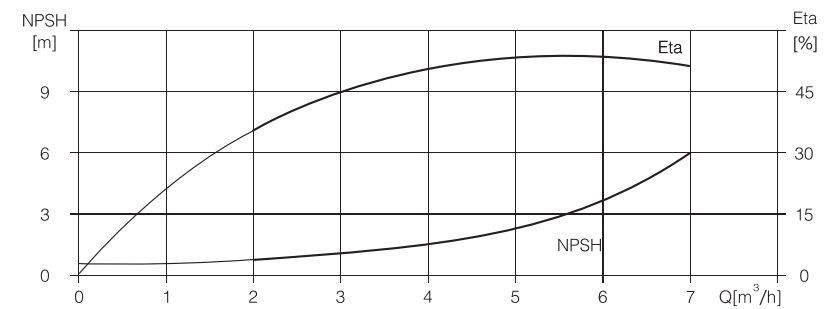
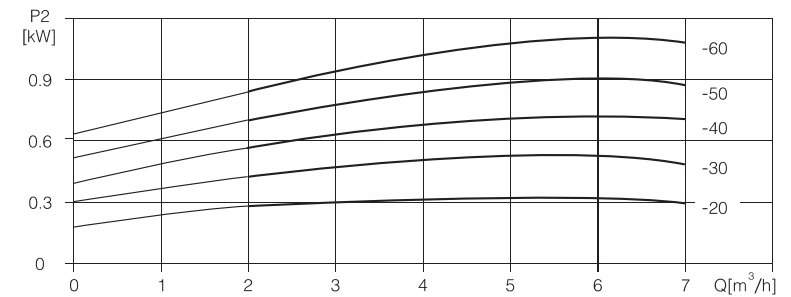
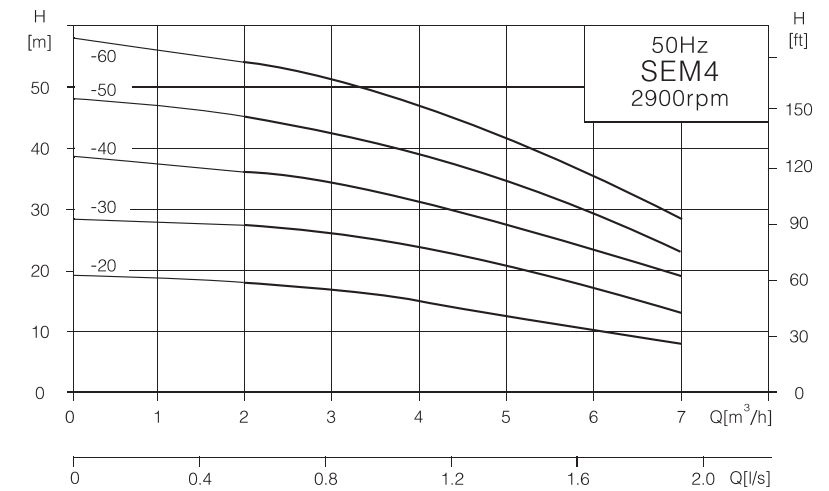
Model	Power		Q (m ³ /h)	1	2	3	4	5	6	7
	(kW)	(HP)								
SEM4-20	0.37	0.55	H (m)	19	18	17	15	12.5	10	7.5
SEM4-30	0.55	0.75		28	27	26	23.5	20.5	17	13
SEM4-40	0.75	1		37.5	36	34	31	27	23	19
SEM4-50	1.1	1.5		47	45	42.5	39	34	29	23
SEM4-60	1.1	1.5		56	54	51	47	41.5	35.5	28

Installation dimensions and weight



Motor	Model	Dimension (mm)				Weight (kg)
		L	L2	L3	D	
3ph/1ph	SEM4-20	339	114	98	137	12
	SEM4-30	366	141	125	137	12
	SEM4-40	424	168	152	156	13
	SEM4-50	451	195	179	156	15
	SEM4-60	478	222	206	156	15

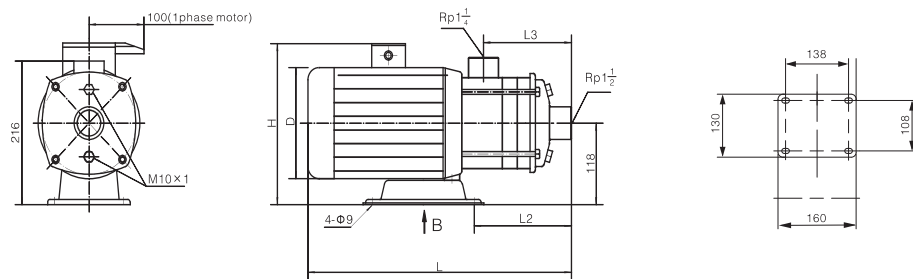
Performance curve



Performance data

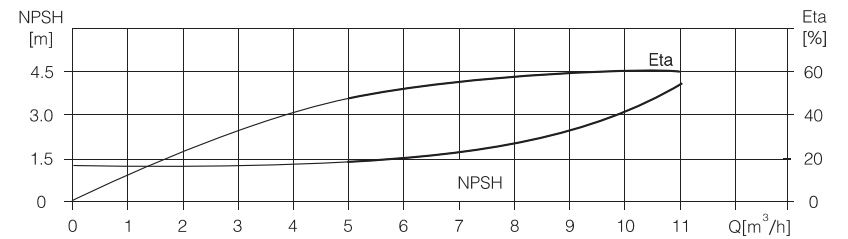
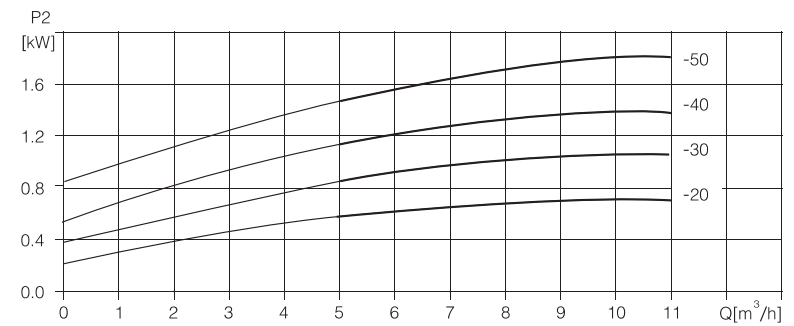
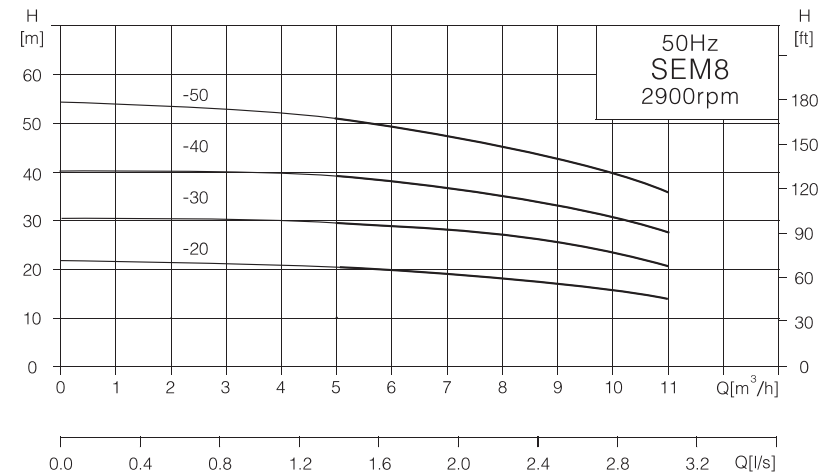
Model	Power		Q (m ³ /h)	5	6	7	8	9	10	11
	(kW)	(HP)								
SEM8-20	0.75	1	H (m)	19.5	19	18.5	17.5	16.5	15	13.5
SEM8-30	1.1	1.5		29	28.5	27.5	26.5	24	22	20
SEM8-40	1.5	2		39	38	36.5	35	32	29.5	26
SEM8-50	2.2	3		50.5	49	46.5	44	41	38	33

Installation dimensions and weight



Motor	Model	Dimension (mm)					Weight (kg)
		L	L2	L3	H	D	
3ph/1ph	SEM8-20	430	130	108	225/255	156	19
	SEM8-30	460	160	138	225/255	156	22
	SEM8-40	500	190	168	240/270	166	26
	SEM8-50	530	220	198	240/270	166	28

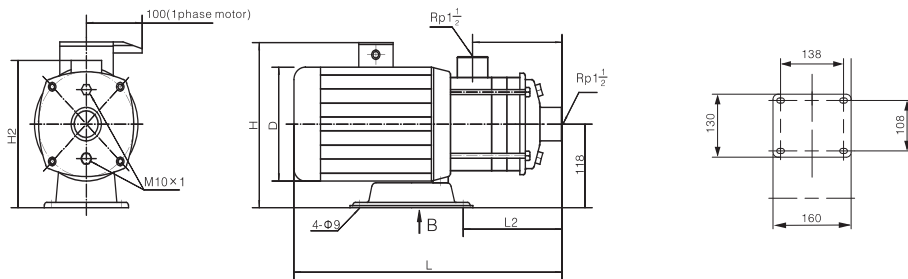
Performance cruve



Performance data

Model	Power		Q (m ³ /h)	7	9	11	12	13	15	16
	(kW)	(HP)								
SEM12-20	1.2	1.6	H (m)	23	22	20.5	19.5	18.5	15.5	13
SEM12-30	1.8	2.4		35	33.5	31	29.5	28	23.5	20
SEM12-40	2.4	3.3		47	45	41.5	39.5	37.5	31.5	27.5
SEM12-50	3	4		60	56.5	52.5	50	47	40	35

Installation dimensions and weight



Motor	Model	Dimension (mm)						Weight (kg)
		L	L2	L3	H	H2	D	
3ph/1ph	SEM12-20	430	139	111	225/255	220	156	20
	SEM12-30	470	169	141	240/270	220	166	24
	SEM12-40	510	199	171	240/270	220	166	28
	SEM12-50	540	229	201	270/	233	178	32

Performance cruve

